

oursson®



bon appétit

Operation manual



Hand blender HB6060





Congratulations on purchasing the Oursson Hand Blender!





### **6 Chapter 1: Introduction**

- 6** Safety Instructions
- 8** Recommendations
- 9** Complete set
- 10** Parts of the structure

### **11 Chapter 2: Operation**

#### **11 Whisk attachment**

- 11** Measuring cup
- 12** Nozzle for blending
- 12** Bracket for vertical mounting and storage
- 13** Chopper attachment
- 15** Operation
- 15** Power Control
- 16** Recommendations for grinding various products
- 17** Cleaning and Maintenance
- 17** Quick Clean
- 17** Mounting the wall bracket

### **18 Chapter 3: Other**

- 18** Specifications
- 19** Product Certification
- 20** Servicing

# INTRODUCTION

## SAFETY INSTRUCTIONS



### **Danger symbol**

A reminder to user about high voltage.

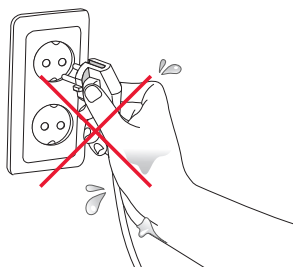
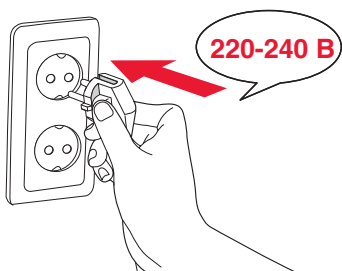


### **Warning symbol**

A reminder to user about the necessity of operating exactly according to the instructions.

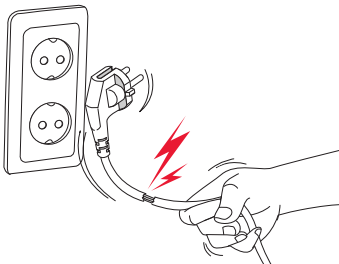
When using electrical appliances should take the following precautions:

- Use the device according to the following operation guide.
- Install the device on a stable surface.
- Use only the tools which are the included in the product set.
- To protect against risk of electrical shock do not put motor body, cord, or electrical plug of the blender in water or other liquid. If for some reason the water got into the unit, contact an authorized service center (ASC) OURSSON AG.
- For power supply use a power grid with proper characteristics.
- Do not use the device in areas where the air can contain vapors of flammable substances.
- Never attempt to open the device by yourself – it could possibly be the reason of an electrical shock, can lead to product malfunction and will invalidate the manufacturer's warranty. For repair and maintenance, contact only authorized service centers meant for repair of products under the trademark OURSSON.
- When moved from a cool to a warm place and vice versa unpack it before use and wait 1-2 hours without turning it on.
- In order to prevent electrical shock do not immerse the entire product or the wires into the water.



## INTRODUCTION

- Be particularly careful and cautious when using the device near children.
- Do not touch any moving parts, as this may cause injury.
- The power cord is specially made relatively short in order to avoid the risk of injury.
- Do not allow the cord to hang over the sharp edge of the table or touch hot surfaces.
- Do not connect this device to a grid which is overloaded with other appliances: it can lead to the fact that the device will not function properly.
- Do not install the device near gas and electric stoves and ovens.
- After use, make sure to disconnect the device from the power grid.
- Keep the device from bumps, falls, vibration and other mechanical influences.
- Make sure to disconnect the device from the power grid before cleaning or changing accessories.
- Do not use the device outdoors.
- This appliance is not intended for use by persons (including children) with reduced physical, sensory or mental capabilities, or lack of experience and knowledge. They can only use the device under the supervision of the person responsible for their safety, or after instruction on the safe use of the device. Do not allow children to play with the product.
- Use the product for its intended purpose.
- This product is intended only for use in the home.
- If the power cord is damaged, it must be replaced by a specialist from the authorized service center ( ASC ) OURSSON AG to avoid danger.
- Do not use abrasive cleaning materials, organic cleaning products (alcohol, gasoline etc.).



## INTRODUCTION

## RECOMMENDATIONS

- When cleaning the device it is allowed to use a small amount of neutral detergent.
- Do not immerse the motor unit into water, it may cause electrical shock.
- During operation, do not substitute the blender blades close to hand, as well as kitchen utensils to avoid injury and / or damage to the instrument. Spatula can be used only when the unit is turned off.
- To not dull knives, do not use the device for crushing ice, coffee or a very solid products, as well as for mixing solids.
- Before using the device, please read the user manual. After reading, please keep it for future use.
- All illustrations in this manual are schematic representations of real objects, which may differ from the actual images.
- To avoid injury before establishing knives, put the chopping cup on a clean flat surface.
- Do not operate without making sure that the cap for chopping bowl is closed correctly and firmly.
- Use only the parts included in the product kit.

**NOTE!** The operation of this device in any case does not imply the use of physical force to it, as this may cause damage to the product through the fault of the user.

### COMPLETE SET

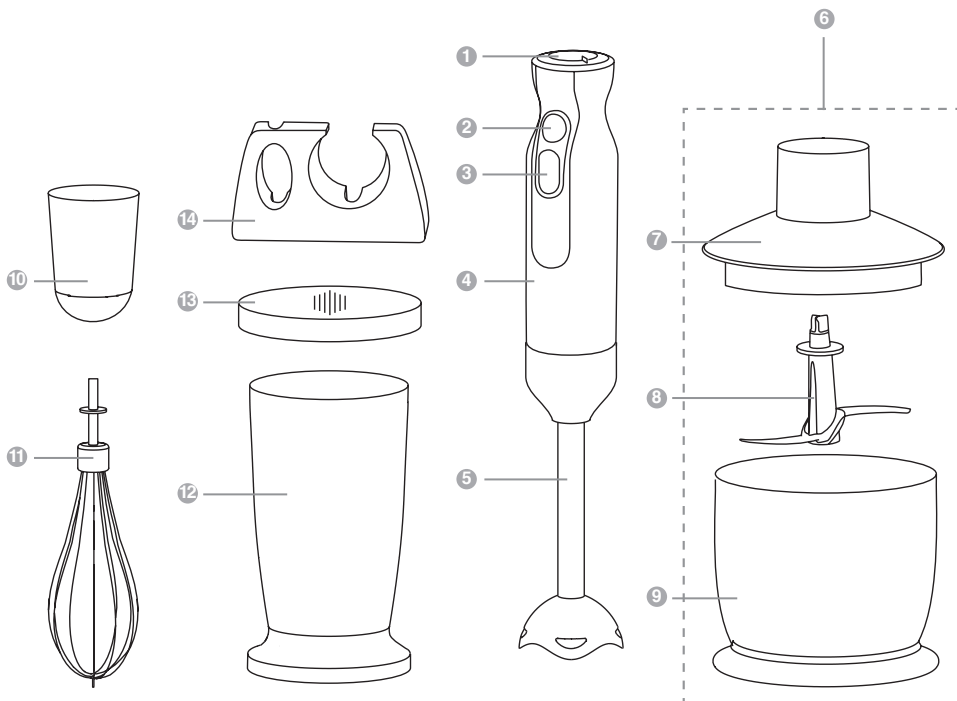
Motor unit. ....	1 pc.
Whisk attachment. ....	1 pc.
Nozzle for blending. ....	1 pc.
Chopper attachment 500 ml. ....	1 pc.
Measuring cup 500 ml. ....	1 pc.
Bracket for vertical mounting and storage. ....	1 pc.
Operating manual with warranty card. ....	1 pc.

## INTRODUCTION

### PARTS OF THE STRUCTURE

- ① Speed Switch
- ② On / Off button
- ③ Button for TURBO Mode
- ④ Motor unit
- ⑤ Nozzle for blending
- ⑥ Chopper
- ⑦ Cap for chopper

- ⑧ Blade for chopping
- ⑨ Chopping bowl
- ⑩ Adapter for whisk attachment
- ⑪ Whisk attachment
- ⑫ Measuring cup 500 ml
- ⑬ Cover lid
- ⑭ Bracket for vertical mounting and storage

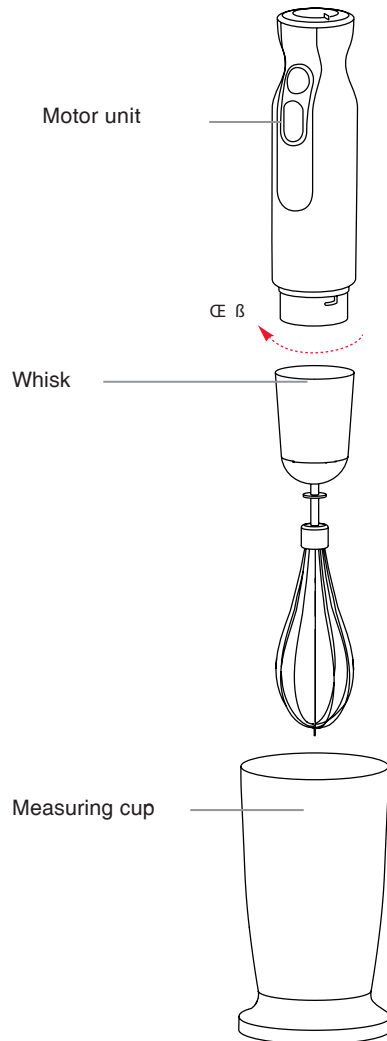


## WHISK ATTACHMENT

Used for whipping egg whites, creams, biscuit dough, dough for pancakes, stirring desserts.

### Nozzle assembly

Insert the motor unit in the nozzle and turn it clockwise until it stops. Dip the whisk in a bowl with food and turn on the blender. It is comfortable to use the measuring cup for whipping a small amount of products. For best results, whisk a small amount of ingredients at the same time. For example, no more than four egg whites. Use a wide bowl and move the whisk clockwise.



## MEASURING CUP

The maximum volume of glass - 500 ml. Comfortable bowl for mixing or chopping a small amount of ingredients. Do not mix / whisk in the measuring cup products of more than 300 ml in order to avoid splashing. Miscible / whippable products should not be too hot, otherwise there is a risk of injury from splashing.

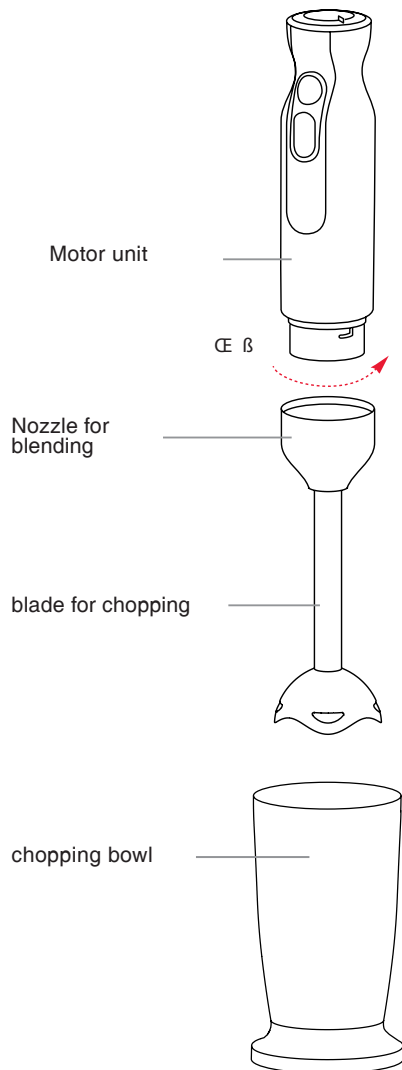
## OPERATION

### NOZZLE FOR BLENDING

Used for soups-purees, baby food, pies and sauces.

#### Nozzle assembly

Insert the motor unit to the nozzle and turn counterclockwise until it stops.





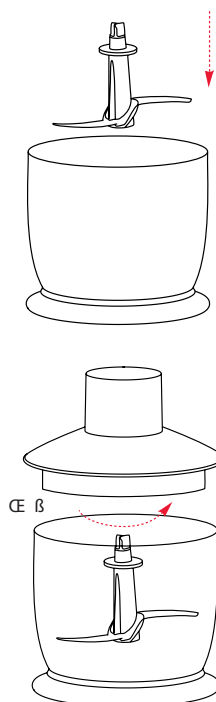
## CHOPPER ATTACHMENT

Used for the preparation of baby food, a small amount of meat, chopping onions, nuts, garlic, making pates, butter with additions etc. Chopper attachment is not intended for liquid foods.

**NOTE!** Chop in the chopper only boneless meat, carefully removing the tendons; cut the meat into small pieces. Maximum meat portion for minced meat – 200 gr.

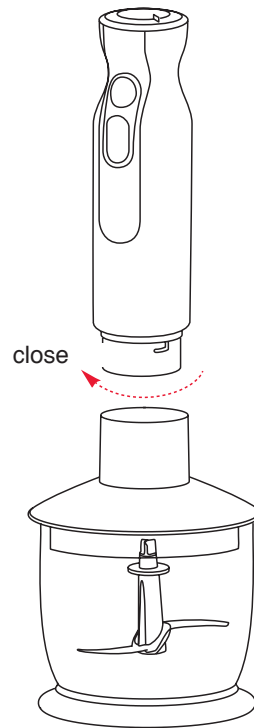
### Assembly

1. Set the blades on the pin located in the center of the bowl for grinding. The blades are sharp, be careful not to cut yourself, always hold them by the plastic rod.
2. After installing the blades, put products in the bowl and placing the lid on top of the bowl, turn it clockwise until it stops. Make sure it is properly closed (the ledge inside the bowl should enter the deepening in the lid) and tight.
3. Screw the motor unit into the lid clockwise as well.



## OPERATION

**NOTE!** To avoid injury before establishing knives, put the chopper bowl on a clean flat surface. When disassembling the blender first disconnect the motor unit. Never remove it with the lid.



## OPERATION

Before first use, wash the blender (see «Quick Clean»). The time when the device idles shall not exceed 15 seconds.

**NOTE!** The blades are very sharp, be careful.

Before assembling or removing nozzles ensure that the device is unplugged from the power outlet. Maximum time of continuous use of the device with a whisk or chopper should not exceed 1 minute, then you should turn off the blender for 3 minutes.

Maximum time of continuous use of the device with a whisk for whipping must not exceed 2 minutes, then you should turn off the blender for 3 minutes. The consecutive alternation of these two intervals will provide reliable and trouble-free operation of the device.

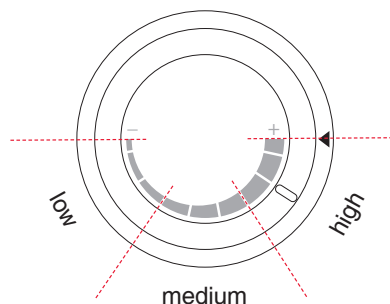
1. Assemble the necessary attachment device as described above.
2. Plug the device into a power outlet.
3. Select the required speed by setting its speed switch. The blender has a smooth speed control (from low speed to high). Then press and hold the on / off button.
4. You can also turn on the blender by holding down the Turbo Mode. In this case, the device will operate at maximal speed all the

time. The speed will not change even if you change the position of the switch.

5. To switch off, release the Turbo Mode.
6. Unplug the power cord from the outlet.
7. Then you can disassemble the device. You can open the lid of the chopper after removing the motor unit.
8. After using the blender, place it in the large hole of the bracket.









## POWER CONTROL

The device is equipped with a smooth speed control. To change the speed, use the slider from low to high in a clockwise direction.



## OPERATION

### RECOMMENDATIONS FOR GRINDING VARIOUS PRODUCTS

Ingredients		Maximum amount	Time of chopping	Speed
Onion		200 gr	~ 20 sec	from low to medium
Parsley		30 gr	~ 20 sec	<b>TURBO</b> mode
Garlic		20 cloves	~ 20 sec	from low to high
Boiled carrots		200 gr	~ 15 sec	from low to high
Almonds/ hazelnuts		200 gr	~ 30 sec	<b>TURBO</b> mode
Walnut		200 gr	~ 25 sec	from medium to high
Parmesan cheese		250 gr	~ 30 sec	<b>TURBO</b> mode

## CLEANING AND MAINTENANCE

1. Disconnect the device from the outlet and remove the nozzle.
2. Rinse the whisk attachment under running water without the use of abrasive cleaners or detergents. After washing, place the nozzle vertically to dry it.

**NOTE!** Do not dip the upper part of whisk attachment in water as the lubrication of the bearings inside can be flushed.

3. Wash the chopping bowl, the measuring cup, the whisk attachment and the knives in warm soapy water. Whisk attachment and chopper bowl are not recommended to be washed in the dishwasher, as this will destroy the plastic.
4. Wipe the device with a damp cloth. Never immerse it in water because of the danger of electrical shock.
5. Thoroughly dry all parts.

**NOTE!** The blades are very sharp, be careful.

6. Attach the whisk attachment to the motor unit and place it vertically in the wall bracket as shown in the figure.

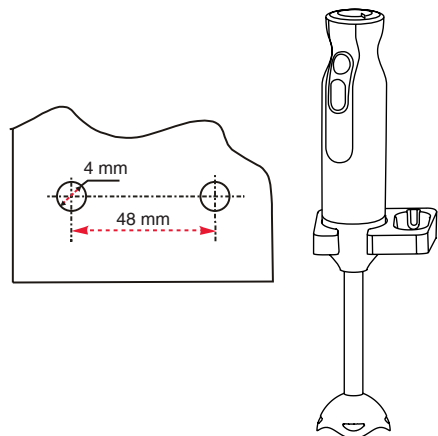
## QUICK CLEAN

If you want to wash quickly the nozzle before the next use, lower the whisk attachment in the measuring cup half filled with water, and turn on the device for a few seconds.

## MOUNTING THE WALL BRACKET

You can attach the wall bracket as follows:

1. Drill two holes in the wall, by strictly adhering to the dimensions shown in the figure below.
2. Hammer two dowels in the holes. Fasten the bracket to the wall using two screws.



## Other

Specifications	
Model	HB6060
Power consumption, W	600
Power parameters	~ 220-240 V; 50 Hz
Class of protection against electric shock	II
Storage and transportation temperature	from -25°C to +35 °C
Temperature of operation	from +5°C to +35°C
Requirements for air humidity	15-75%
Dimensions of the device, mm	390x64x64
Weight, kg	0,86

**NOTE!** Only a qualified specialist from the authorized service center OURSSON AG should make the repair of the hand blender.

[illegible]

## PRODUCT CERTIFICATION

**The product is certified in Russia by the certification body of products:**

POCC RU.0001.11AE61

AUTONOMOUS NONCOMMERCIAL  
ORGANIZATION OF EXPERTISE AND  
QUALITY CONTROL CENTER CERTIFICATION  
«EURO TEST»;

Registered address: 109147, Moscow, Small  
Kalitnikovskaya street, 7, 1037700252314, tel. 8  
495 229 5603, fax: 8 495 229 5603;  
e-mail: euro test@mail.ru

In the absence of a copy of the new certificate in  
the box ask it from the seller.

**This product meets the requirements of  
normative documents:**

СТБ МЭК 60335-2-14-2005,  
ГОСТ Р 51318.14.1-2006 (СИСПР 14-1:2005),  
ГОСТ Р 51318.14.2-2006 (СИСПР 14-2:2001),  
ГОСТ Р 51317.3.2-2006 (МЭК 61000-3-2:2005),  
ГОСТ Р 51317.3.3-2008.

**Certificate number:** TC RU C-CH.  
AE61.B.00037.

**Validity:** from 18/06/2012 to 06/17/2015.

**Manufacturer:** «OURSSON AG», Utoquai 39,  
8008 Zurich, Switzerland.

**Factory Addresses:** «Guangdong Midea  
Microwave and Electrical Appliances  
Manufacturing Co., LTD», No.6, Yong an Road,  
Beijiao, Shunde, Foshan, Guangdong, PRC.



## SERVICING

Company OURSSON AG expresses great appreciation to you for choosing our products. We have done everything possible so that this meets your needs, and the quality corresponds to the best world standards. If your OURSSON branded product will need maintenance, please contact one of the authorized service center (hereinafter – ASC). A complete list of ASC and their exact addresses can be found on the website [www.oursson.ru](http://www.oursson.ru), as well as by calling free hotline number OURSSON AG.

If you have questions or problems with OURSSON AG products, please contact in writing form the organization authorized to accept and meet the demands for the products of poor quality , - «Management Service Company », 109202 , Moscow, Fraser Highway, 17A , 1A or email [info@oursson.ru](mailto:info@oursson.ru).

## Warranty obligationss

### OURSSON AG:

1. Warranty obligations OURSSON AG, provided ASC OURSSON AG, apply only to models designed OURSSON AG for the production or supply and sale within the country where the warranty service is provided, purchased in this country, certified for compliance with the standards of this country, and also marked the with official marks of conformity.
2. Warranty obligations OURSSON AG operate within the law on protection of consumer rights and are regulated by the laws of the country in which they are provided, and only when the product is used exclusively for personal, family or household purposes. Warranty obligations OURSSON AG shall not apply to uses of goods for business purposes or in connection with the acquisition of goods to meet the needs of enterprises, institutions and organizations.

## Other

### 3. OURSSON AG sets for its products the following terms of use and warranty periods:

Product name	Terms of use	Warranty Period
Microwave ovens, breadmakers, induction hobs	60	12
Multicookers, kitchen processors, electric kettles, electric grills, hand blenders, hand mixers, meat grinders, blenders, toasters, airpots, toasters, juicers, steamers, coffee makers, choppers	36	12
Kitchen scales	24	12

### 4. Warranty obligations OURSSON AG shall not apply to the following products, if their replacement is assumed and is not connected with disassembling products:

- Batteries.
  - Cases, straps, cords for carrying, mounting accessories, tools, documentation that came with the product.
- ### 5. Warranty does not cover defects caused due to violations of the rules of consumer use, storage or transportation of the goods, actions of third parties or force majeure,

including but not limited to the following cases:

- If the defect was a result of careless handling, use for other purpose, violations of conditions and rules of operation set forth in the instruction manual, including as a result of exposure to high or low temperatures, high humidity or dust, traces of opening the device independently and/or self-repair, mismatch state standards for power grids, getting liquids, insects or other foreign objects, substances inside the device, as well as long-term use of the product in extreme operational modes.
- If the defect of the product was a result of unauthorized attempts to test the product or make any changes in its construction or software programs, including repair or maintenance in unauthorized service centers.
- If the defect of the product was a result of use of non-standard and/or low quality equipment, accessories, spare parts, batteries.
- If the defect of the product is associated with its use in conjunction with additional equipment (accessories), other than additional equipment recommended by OURSSON AG for use with this product. OURSSON AG is not responsible for the quality of the additional equipment (accessories) manufactured by third parties, for the quality of its products

together with such equipment, as well as the quality of the work of the additional equipment of OURSSON AG together with the products of other manufacturers.

6. Product defects detected during the lifetime of the product are eliminated by the authorized service centers (ASC). During the warranty period, elimination of defects is free of charge with the presentation of the original certificate of guarantee and documents that confirm the fact and date of the contract of retail purchase. In the absence of such documents, warranty period is calculated from the date of manufacture of goods. It should be taken into account:
  - Setup and Installation (assembly, the connection, etc.) of the product described in the documentation attached to it, does not enter the scope of warranty OURSSON AG and can be performed by the user as well as the specialists of most authorized service centers on a paid basis.
  - Work upon maintenance of products (cleaning and lubricating the moving parts, replacement of consumables and supplies, etc.) are made on a paid basis.
7. OURSSON AG is not responsible for any damage directly or indirectly caused by their products to people, pets, property, if it occurred as a result of non-observance of the rules and conditions of use, storage,

transportation or installation of the product, intentional or negligent actions of consumer or third parties.

8. Under no circumstances OURSSON AG is not responsible for any special, incidental, indirect or consequential loss or damage, including but not limited to: lost profits, damages caused by interruptions in the commercial, industrial or other activities, arising from the use of or inability to use the product.
9. Due to continuous product improvement design elements and some technical specifications are subject to change without prior notice from the manufacturer.

## Other

### Using the product when after the terms of use (lifetime):

1. Lifetime set by OURSSON AG for this product applies only when the product is used exclusively for personal, family or household needs, as well as the consumer observes the correct operation, storage and transportation of products. Under the condition of careful handling of the product and compliance with the rules of operation the actual life may exceed the lifetime set by OURSSON AG.
2. At the end of the product lifetime, you should contact an authorized service center for to conduct a preventive maintenance of the product and determine the suitability for further use. Work on conducting a preventive maintenance of the products is also made in service centers on paid basis.
3. OURSSON AG does not recommend the use of this product after the end of its lifetime without its preventive maintenance by the authorized service center, since in this case, the product can be dangerous to the life, health or property of the consumer.

### Product Recycling and Disposal

After the expiration of the lifetime, the product cannot be disposed with another household waste. Instead, it shall be deposited in the appropriate recycling collection point for electrical and electronic equipment for proper treatment and disposal in accordance with federal or local law. By disposing correctly this product, you will help to conserve natural resources and preventing the product from damaging the environment and human health. For more information on the collection point and recycling of this product, please contact your local municipal authorities or the enterprise for household waste disposal.



### Date of manufacture

Each product has a unique serial number in the form of alphanumeric row and is duplicated with a barcode that contains the following information: name of the product group, date of manufacture, serial number of the product. Serial number is located on the rear of the product, on the package and the warranty card.



- ❶ The first two letters - correspondence to the product group (hand blender - HB).
- ❷ The first two digits - the year of production.
- ❸ The second two digits - production week.
- ❹ Last digits - serial number of the product.

### Note!

To avoid misunderstandings, we highly recommend you to read carefully the instruction manual and the warranty obligations. Check the correctness of the warranty card. Warranty card is valid only if the following are correctly and clearly stated: model, serial number, date of purchase, clear stamps, buyer's signature. The serial number and the model of the device must be the same as in the warranty card. If these conditions are not fulfilled or the data specified in the warranty card was changed, the warranty card is invalid.



OURSSON AG hotline provides complete information about the company's activity in Russia, CIS and Baltic countries. Professional operators quickly answer to any question. You can contact the unified center for service support, for recommendations about the setup and connection, to get information about local sales, with questions about the promotions and yearly drawings conducted by the company, as well as with any other questions about the company's activities on the territory of Russia, CIS and Baltic countries.

Any questions? Call us, we can help!

Hotline OURSSON AG (free calls from fixed phones)  
8 800 100 8708.

The hotline work schedule is: Monday-Friday from 9:00 to 20:00 (Moscow time). Saturday, Sunday and public holidays are rest days.

This manual is under protection of international and Russian copyright law. Any unauthorized use of the instructions, including copying, printing and distribution, but not limited to, involves the application of the guilty person to civil liability and criminal liability in accordance with Article 146 of the Criminal Code and the administrative responsibility in accordance with Article 7.12 of the Administrative Code (previously Article 150.4).

Contact information:

1. Manufacturer of goods - OURSSON AG (Orson AG) Utokvay 39, 8008 Zurich, Switzerland.
2. Organization authorized to accept and meet the demands for the goods of poor quality, –  
«Management Service Company», 109202, Moscow, Fraser Highway 17A, 1A. Ukraine LLC  
«Universal Distribution Company», 03065, Kyiv, blvd. I.Lepse / Academica Kablukova, 51/16.
3. Certification information product available on the website [www.oursson.com](http://www.oursson.com).
4. Importers of products OURSSON AG:  
Russia: ООО «Orson», 125171, Russia, Moscow, Leningrad Highway 16A, 2.  
Republica Moldova: S.C. «PLAI VERDE» S.R.L. MD-2002, str. Muncești highway., 271/A, Chișinău.  
Ukraine: TOV «Universal Distribution Company», 03065, Kyiv, blvd. I.Lepse / Akademika Kablukova, 51/16.
5. Product Suppliers OURSSON AG:  
Belarus: «Nikita plus», 220094, Minsk, 2nd Cycle lane., 30, office 603.

OURSSON AG  
MADE IN CHINA





Hotline OURSSON AG  
(free calls from fixed phones ):  
8 800 100 8 708

**[www.oursson.ru](http://www.oursson.ru)**

