

oursson®



bon appétit

Instruction manual
& warranty card

*Live
juice*



Cold press juice
maker JM8002



Congratulations on purchasing your new juice maker!

4 Chapter 1: Introduction

- 4** Safety instructions
- 7** Recommendations
- 7** Special features
- 7** Getting started
- 8** Product set
- 9** Parts of the structure

10 Chapter 2: Operation

- 10** Assembly instructions (for juice)
- 12** Cooking steps
- 14** Cleaning and maintenance
- 16** Assembly instructions (for puree)
- 17** Reminder for user

19 Chapter 3: Troubleshooting

21 Chapter 4: Other

- 21** Specifications
- 22** Servicing

INTRODUCTION

SAFETY INSTRUCTIONS



Danger symbol

A reminder to user about high voltage.

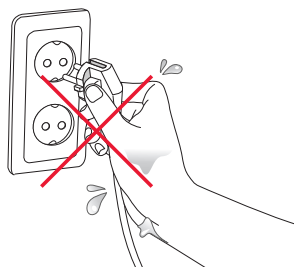
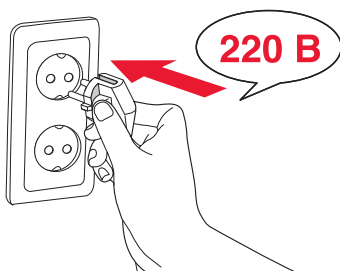


Warning symbol

A reminder to user about the necessity of operating exactly according to the instructions.

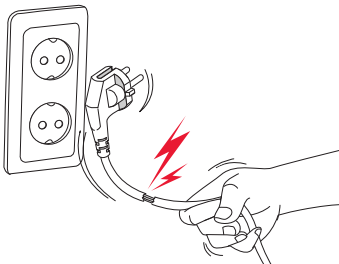
When using electrical appliances should take the following precautions:

- Use the device according to the following operation guide.
- Install the device on a stable surface.
- Use only the tools which are included in the product set.
- To protect against risk of electrical shock do not put the cord in water or other liquid. If for some reason the water got into the unit, contact an authorized service center (ASC) OURSSON AG.
- For power supply use a power grid with proper characteristics.
- Do not use the device in areas where the air can contain vapors of flammable substances.
- Never attempt to open the device by yourself – it could possibly be the reason of an electrical shock, can lead to product malfunction and will invalidate the manufacturer's warranty. For repair and maintenance, contact only authorized service centers meant for repair of products under the trademark OURSSON.
- When moved from a cool to a warm place and vice versa unpack it before use and wait 1-2 hours without turning it on.
- In order to prevent electrical shock do not immerse the entire product or the wires into the water.



INTRODUCTION

- Be particularly careful and cautious when using the device near children.
- Do not touch any moving parts, as this may cause injury.
- The power cord is specially made relatively short in order to avoid the risk of injury.
- Do not allow the cord to hang over the sharp edge of the table or touch hot surfaces.
- Do not connect this device to a grid which is overloaded with other appliances: it can lead to the fact that the device will not function properly.
- Do not install the device near gas and electric stoves and ovens.
- After use, make sure to disconnect the device from the power grid.
- Keep the device from bumps, falls, vibration and other mechanical influences.
- Make sure to disconnect the device from the power grid before cleaning or changing accessories.
- Do not use the device outdoors.
- This appliance is not intended for use by persons (including children) with reduced physical, sensory or mental capabilities, or lack of experience and knowledge. They can only use the device under the supervision of the person responsible for their safety, or after instruction on the safe use of the device. Do not allow children to play with the product.
- Use the product for its intended purpose.
- This product is intended only for use in the home.
- If the power cord is damaged, it must be replaced by a specialist from the authorized service center (ASC) OURSSON AG to avoid danger.



OPERATION

- Always make sure the device is disconnected before cleaning.
- Do not use abrasive cleaning materials, organic cleaning products (alcohol, gasoline etc.).
- When cleaning the device it is allowed to use a small amount of neutral detergent.
- Make sure that the switch is in the OFF position after each use. Before disassembling the device, also make sure that the motor has stopped completely.
- Do not put your fingers or any other foreign objects into the hopper during operation. If there is an obstruction in the hopper, use a pusher. If it doesn't work, turn off the device and disassemble it, removing all the food remains.
- Carry the device only by holding its base.
- Do not use this device without pulp container.
- If the screw instantly stops rotating, stop using the device and use the "REV" function for 3-5 seconds.
- To avoid overheating of the motor, do not use the device more than 30 minutes nonstop. Make a 5-minute pause and let the device cool down.
- Weight of the device is approximately 6.45 kg. Be careful and cautious when moving it in order to avoid injury or damage to the device.
- In order to avoid possible malfunctions of the device, do not wash it in hot water with a temperature above 80°C, because some elements are made of silicone.
- If the mesh filter is damaged, stop using the device and contact the authorized service center (ASC) OURSSON AG.

NOTE! The operation of this device in any case does not imply application of any force to it, as this may damage the product due to user fault.

RECOMMENDATIONS

- Please read the instruction manual before using the device. Keep the manual after reading for further use.
- All illustrations in this manual are schematic representations of real objects, which may differ from the actual images.

GETTING STARTED

Before using the cold press juice maker for the first time, please carefully wash it as described in instructions. Your press juice maker is now ready for use.

SPECIAL FEATURES

- Juice preparation using cold press
- Puree preparation
- Baby food preparation

Different bowls allow preparing juice with more or less pulp and puree, depending on your wish and the ingredients. The juice bowl is used for extracting juice, including juice from citrus. The puree bowl is used for obtaining puree from fruit, vegetables and berries; preparing baby food, sauces, grinding spices and for extracting juice with a large amount of pulp.

INTRODUCTION

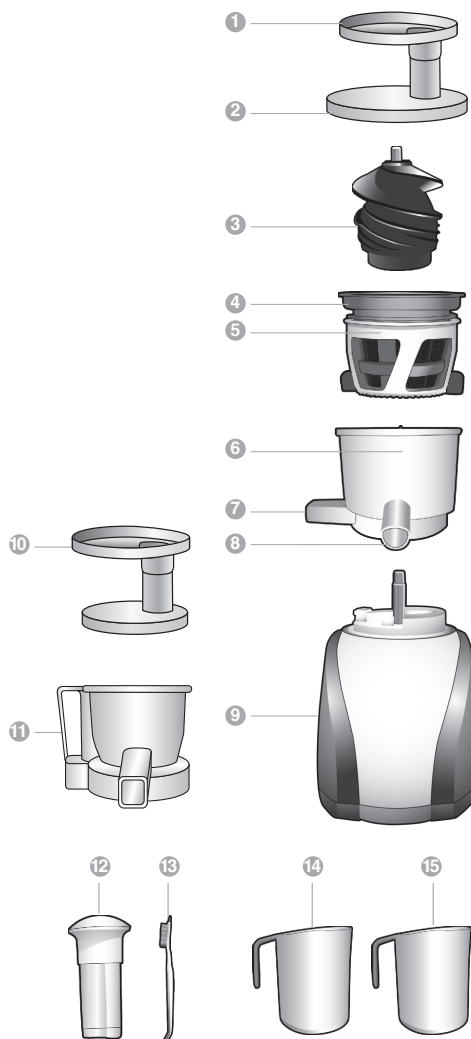
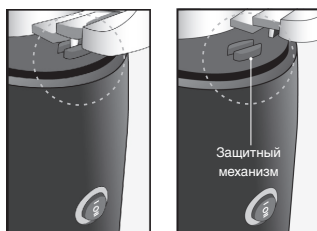
PRODUCT SET

Juice bowl cover.....	1 pc.
Puree bowl cover.....	1 pc.
Pressure screw.....	1 pc.
Three-tier mesh filter.....	1 pc.
Rotating brush.....	1 pc.
Juice bowl.....	1 pc.
Puree bowl.....	1 pc.
Motor base.....	1 pc.
Pusher.....	1 pc.
Cleaning brush.....	1 pc.
Juice pitcher.....	1 pc.
Pulp container.....	1 pc.
Recipe book.....	1 pc.
Instruction manual with warranty card.....	1 pc.

PARTS OF THE STRUCTURE

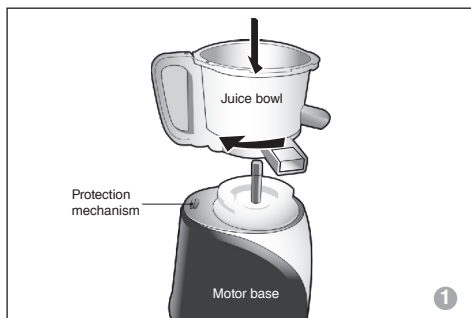
- ❶ Feeding chute
- ❷ Juice bowl cover
- ❸ Pressure screw
- ❹ Three-tier mesh filter
- ❺ Rotating brush
- ❻ Juice bowl
- ❼ Spout for pulp
- ❽ Spout for juice
- ❾ Motor base
- ❿ Puree bowl cover
- ⓫ Puree bowl
- ⓬ Pusher
- ⓭ Cleaning brush
- ⓮ Juice pitcher
- ⓯ Pulp container

NOTE! If the bowl is not installed correctly on the motor base, a protective mechanism is triggered and the device does not turn on. To turn on the device, install and properly fix the bowl on the base, as shown in the figure.



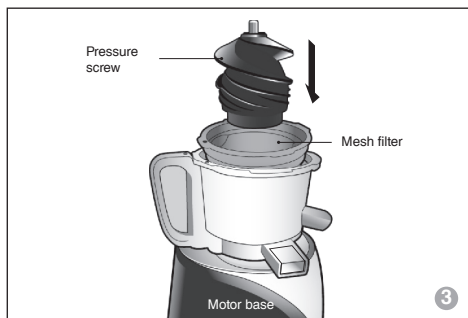
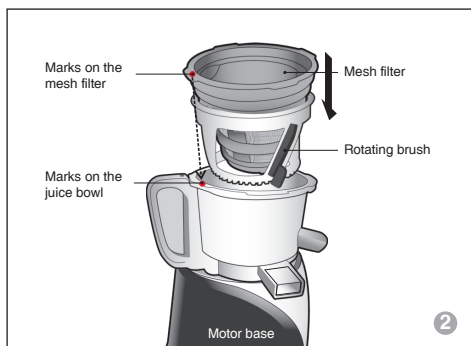
OPERATION

ASSEMBLY INSTRUCTIONS (FOR JUICE)



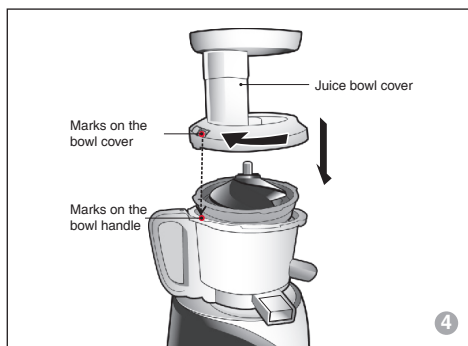
1. Install the juice bowl on motor base. Slowly rotate the bowl clockwise until it stops (Fig.1).

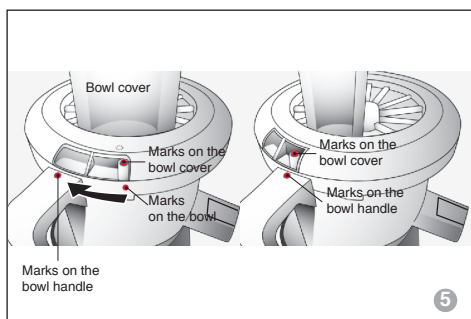
2. Install the three-tier mesh filter in the rotating brush before installing it in the juice bowl. Install the three-tier mesh filter with a rotating brush so that the mark on the mesh filter coincides with the mark on the bowl as shown in Fig. 2.



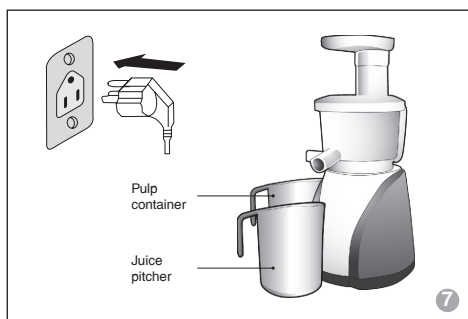
3. Insert the pressure screw in the center of three-tier mesh filter as shown in Fig.3.

4. Install the cover. Place the juice bowl cover on the juice bowl so that the mark on the bowl coincides with the mark on the cover. Then, slowly turn the bowl cover clockwise until the mark on the cover coincides with the mark on the handle, as shown in Fig. 4, Fig. 5.

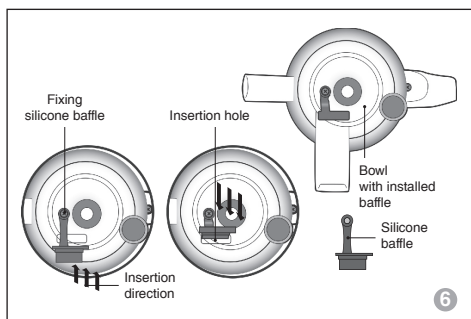




5. To install the silicone baffle for spout, place the baffle as shown in Fig. 6. Then, install the free end of the baffle into the hole located at the bottom of the spout for pulp.



6. Plug the device to the outlet. Place the juice pitcher and the pulp container around the motor base under the corresponding spouts, as shown in Fig. 7.



OPERATION

COOKING STEPS

1. Assemble the device as described in the previous chapter, check whether it is correctly assembled.

NOTE! The device will not work, if the bowl is installed improperly. Plug the device to the outlet.

NOTE! If your products were kept in the refrigerator, place them in clean water for at least 10 minutes.

2. Turn on the device, pressing the button on its back. (Fig.1). The switch has three positions:

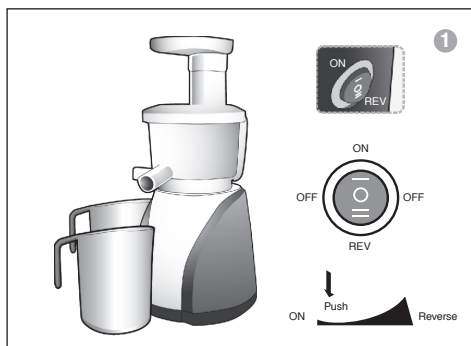
ON – Turns on the device;

OFF – Shutdown, stops the motor;

REV – Reverse.

3. Using the pusher, place the washed and peeled (if needed) ingredients in the feeding chute. Remove the seeds from fruit with large seeds, such as plums, apricots and peaches, before placing them in the chute.

4. When the juice is ready, turn off the device and unplug it from outlet (Fig. 2).



NOTE! To avoid electrical shock or short circuit, do not touch the device with wet hands when it is turned on.



NOTE! The amount of juice depends on how fresh and juicy the products are. The fresher the vegetables or fruit, the more juice out.

NOTE! To avoid motor overheating, do not use the device more than 30 minutes nonstop. Every 30 minutes, make a 5-minute break and let the device cool down.

NOTE! Remove in advance large seeds from such fruit as plums, apricots and peaches, as seeds can damage some details of the device and cause a malfunction.

NOTE! Do not use spoons or any other foreign objects to remove pulp from the spout, as this may damage the device.

NOTE! Use only the pusher included in the product set to push ingredients in feeding chute. It is strictly forbidden to push ingredients with hands, as this may cause injury.

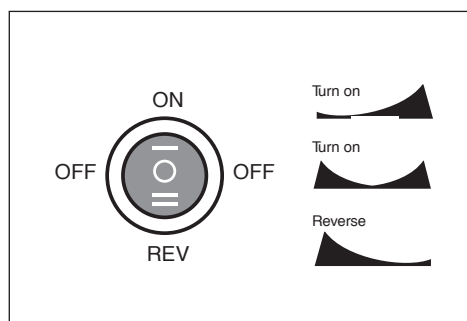
NOTE! Fresh juices should be consumed immediately. They cannot be stored.

If the press stops during operation:

If pressure screw abruptly stops rotating, first turn off the device. Then switch the button to the bottom position REV to remove the ingredients that block the pressure screw. Then turn on the device.

If that does not help, unplug the device from the outlet, disassemble and clean it, as described.

Turn on – Turn off – Reverse.

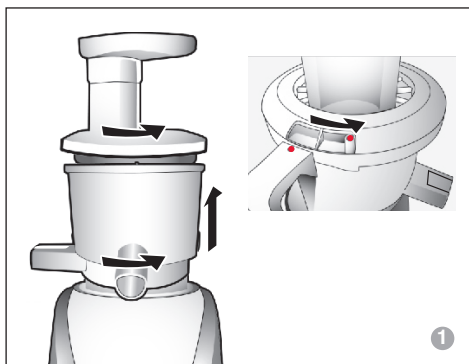


OPERATION

CLEANING AND MAINTENANCE

NOTE! For easier cleaning, rinse the details of the device by adding in advance 1 cup of water in the feeding chute.

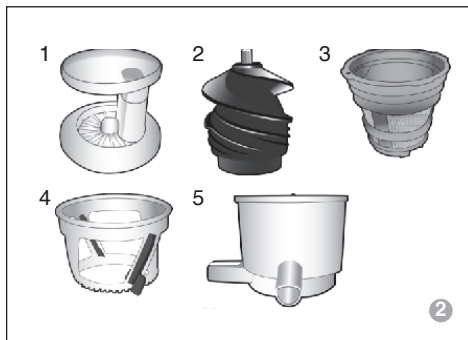
1. Turn off the device and then unplug it from the outlet.
2. First, remove the bowl cover by turning it counterclockwise, then remove the bowl from the motor base, as shown in Fig. 1.



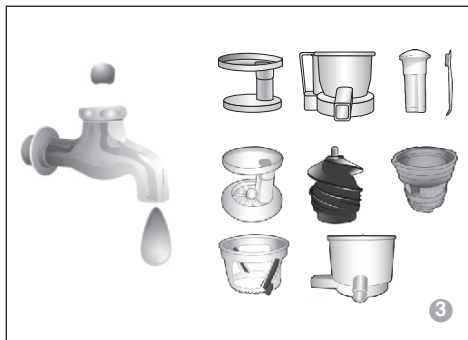
NOTE! Always remove the bowl cover before removing the bowl from the motor base.

3. Disassemble the device in reverse order of assembling it (Fig. 2):

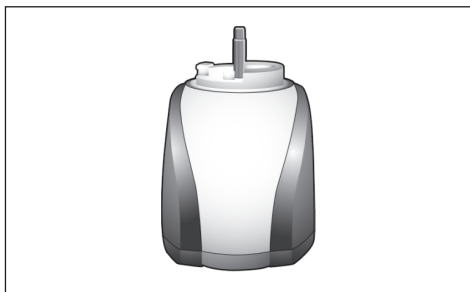
- 1) Remove the bowl by turning it counterclockwise;
- 2) Remove the pressure screw;
- 3) Remove the three-tier mesh filter;
- 4) Remove the rotating brush;
- 5) Remove the juice bowl.



4. Wash the parts of the device under running water, using the cleaning brush to remove dirt (Fig. 3).



5. Do not immerse the motor base in water. Clean it with a damp soft cloth.



6. After cleaning, dry thoroughly all the parts of the device. Store in a clean, dry place.

NOTE! For easy cleaning, clean the device immediately after use. Pulp and remained juice will harden if left to dry on device parts, making it harder to clean.

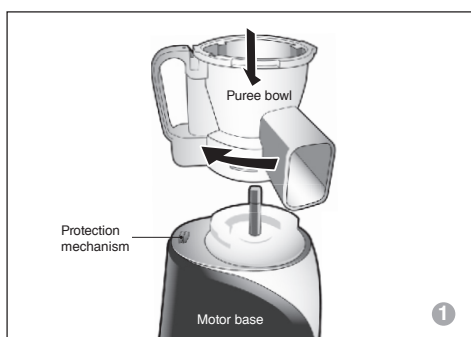
NOTE! Do not use abrasive cleaners, steel wool or metal scoring pads as they can damage the details of the device.

NOTE! It is strictly forbidden to clean parts of the device in dishwasher or dry them in dryer, as this may damage the device.

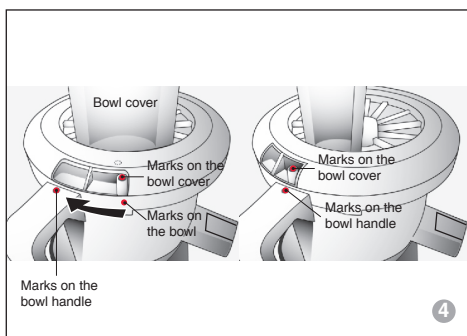
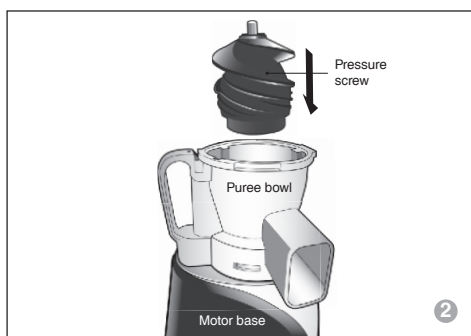
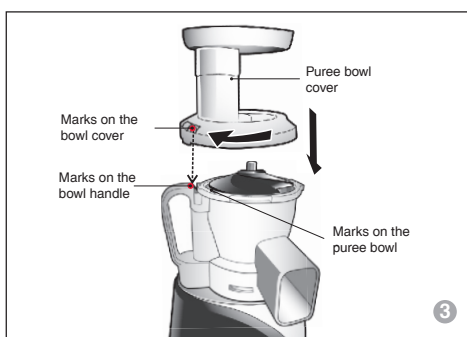
OPERATION

ASSEMBLY INSTRUCTIONS (FOR PUREE)

1. Install the puree bowl on motor base.
Slowly rotate the bowl clockwise until it stops (Fig. 1).



Then, slowly turn the bowl cover clockwise until the mark on the cover coincides with the mark on the handle, as shown in Fig. 3, Fig. 4.



2. Install the pressure screw in the center of the bowl, as shown in Fig. 2.
3. Install the cover. Place the puree bowl cover on the puree bowl so that the mark on the bowl coincides with the mark on the cover.

Use the puree bowl to grind the following products: garlic, ginger, chili pepper, spices, sauces, baby food.

REMINDER FOR USER

1. To assemble-disassemble the device:

Assembly order

For juice: install the juice bowl on motor base. Slowly rotate the bowl clockwise until it stops. After that, install the rotating brush, the three-tier mesh filter and the pressure screw. Close the bowl with cover by turning it clockwise until it stops.

For puree: install the puree bowl on motor base. Slowly rotate the bowl clockwise until it stops. After that, install the pressure screw. Close the bowl with cover by turning it clockwise until it stops.

Disassembly order

First, remove the bowl cover by turning it counterclockwise. After that, remove the remaining parts of device in reverse order of assembling it. Rinse all the removable parts under running water with a cleaning brush, dry them thoroughly and store in a clean, dry place.

2. How to place products:

If needed, the products have to be pretreated, washed, peeled or cut into pieces. Add the products slowly as the speed operation is low (the pressure

screw makes only 47 rotations per minute, considering that the products are cut into small enough pieces).

When juicing finishes, you can switch the device on REV (reverse) mode for 2-5 seconds for easier disassembly.

3. If the device is overloaded or the products are too hard or sticky, the screw can stop. If pressure screw abruptly stops rotating, first turn off the device. Then use the reverse function REV for 3-5 seconds. Then turn on the device. This procedure can be repeated several times.
4. If you cannot open the cover, switch the device on REV (reverse) mode for 2-5 seconds. This will make fruit and vegetables, which are stuck in the device and block the cover, move in the opposite direction. Turn off the device and remove the cover, slowly rotating it.

5. Pretreating products:

Hard products, such as carrots, radish and other root vegetables should be cut into 2cm pieces.

Sticky and fibrous products (greens). If stems are thick, cut them and separate from leaves.



OPERATION

Pretreating fruit.

Wash, peel and remove large seeds, if necessary. Cut into pieces that fit into the feeding chute.

Pretreating beans, nuts and grains.

Hard grains and beans should be soaked in advance in order to prevent motor overload and malfunction.



Problem	Items to check
Device does not work on	<ul style="list-style-type: none">• Check whether the power cord is connected to the outlet. If the device is not connected, plug it to the outlet.• Check whether the device is assembled correctly. If not, disassemble and reassemble according to the instructions.• If the problem persists, contact an authorized service center OURSSON.
Decreased juice rate, pulp contains too much liquid	<ul style="list-style-type: none">• Check whether the device is assembled correctly. If not, disassemble and reassemble according to the instructions.• Make sure all the products are fresh.• If your products were kept in the refrigerator, place them in clean water for at least 10 minutes.
The device has stopped working	<ul style="list-style-type: none">• Make sure the amount of fruit and vegetables is not too large and the motor is not overloaded.• Make sure all the large seeds were removed from the fruit.• Turn off the device and switch it on REV (Reverse) mode for 2-3 seconds. Turn on the device again.
Bowl vibration	<ul style="list-style-type: none">• A small vibration of juice or puree bowl is allowed during operation. It is not considered a malfunction.

TROUBLESHOOTING

Problem	Items to check
Extraneous noises heard during operation	<ul style="list-style-type: none">• Some sounds may appear as a result of interaction of ingredients.
Bowl cover does not open properly	<ul style="list-style-type: none">• When juicing finishes, switch the device on REV (reverse) mode for 2-5 seconds for easier disassembly and use more power to rotate the cover counterclockwise.

Specifications	
Model	JM8002
Power consumption, W	200
Power parameters	~ 220 V; 50 Hz
Class of protection against electrical shock	I class of protection
Storage and transportation temperature	from -25°C to +35 °C
Temperature of operation	from +5°C to +35°C
Requirements for air humidity	15-75%
Number of rotations per minute	47
Motor type	Induction
Dimensions of the device, mm	540x210x280
Weight, kg	6,45

Note! Only a qualified specialist of an authorized service center OURSSON AG can repair the juice maker.

Housing color: RD - Red, GA - Green Apple, OR - Orange, DC - dark cherry.

OTHER

SERVICING

Company OURSSON AG expresses great appreciation to you for choosing our products. We have done everything possible so that this meets your needs, and the quality corresponds to the best world standards. If your OURSSON branded product will need maintenance, please contact one of the authorized service center (hereinafter - ASC). A complete list of ASC and their exact addresses can be found on the website www.oursson.ru, as well as by calling free hotline number OURSSON AG.

If you have questions or problems with OURSSON AG products, please contact in writing form the organization authorized to accept and meet the demands for the products of poor quality, - «BBK Service Center», 109202, Moscow, Fraser Highway, 17A , 1A or email info@oursson.ru.

Warranty obligations

OURSSON AG:

1. Warranty obligations OURSSON AG, provided ASC OURSSON AG, apply only to models designed OURSSON AG for the production or supply and sale within the country where the warranty service is provided, purchased in this country, certified for compliance with the standards of this country, and also marked the with official marks of conformity.
2. Warranty obligations OURSSON AG operate within the law on protection of consumer rights and are regulated by the laws of the country in which they are provided, and only when the product is used exclusively for personal, family or household purposes. Warranty obligations OURSSON AG shall not apply to uses of goods for business purposes or in connection with the acquisition of goods to meet the needs of enterprises, institutions and organizations.

3. OURSSON AG sets for its products the following terms of use and warranty periods:

Product name	Terms of use	Warranty Period
Microwave ovens, breadmakers, induction hobs	60	12
Multicookers, kitchen processors electric kettles, electric grills, hand blenders, hand mixers, meat grinders, blenders, toasters, airpots, toasters, juicers, steamers, coffee makers, choppers	36	12
Kitchen scales	24	12

4. Warranty obligations OURSSON AG shall not apply to the following products, if their replacement is assumed and is not connected with disassembling products:

- Batteries.
- Cases, straps, cords for carrying, mounting accessories, tools, documentation that came with the product.

5. Warranty does not cover defects caused due to violations of the rules of consumer use, storage or transportation of the goods, actions of third parties or force majeure, including but not limited to the following cases:

- If the defect was a result of careless handling, use for other purpose, violations of conditions and rules of operation set forth in the instruction manual, including as a result of exposure to high or low temperatures, high humidity or dust, traces of opening the device independently and/or self-repair, mismatch state standards for power grids, getting liquids, insects or other foreign objects, substances inside the device, as well as long-term use of the product in extreme operational modes.
- If the defect of the product was a result of unauthorized attempts to test the product or make any changes in its construction or software programs, including repair or maintenance in unauthorized service centers.
- If the defect of the product was a result of use of non-standard and/or low quality equipment, accessories, spare parts, batteries.
- If the defect of the product is associated with its use in conjunction with additional equipment (accessories), other than additional equipment recommended by OURSSON AG for use with this product. OURSSON AG is not responsible for the quality of the additional equipment (accessories) manufactured by third parties, for the quality of its products together with such equipment, as well as the quality of the work of the additional equipment of OURSSON AG together with the products of other manufacturers.

OTHER

6. Product defects detected during the lifetime of the product are eliminated by the authorized service centers (ASC). During the warranty period, elimination of defects is free of charge with the presentation of the original certificate of guarantee and documents that confirm the fact and date of the contract of retail purchase. In the absence of such documents, warranty period is calculated from the date of manufacture of goods. It should be taken into account:
 - Setup and Installation (assembly, the connection, etc.) of the product described in the documentation attached to it, does not enter the scope of warranty OURSSON AG and can be performed by the user as well as the specialists of most authorized service centers on a paid basis.
 - Work upon maintenance of products (cleaning and lubricating the moving parts, replacement of consumables and supplies, etc.) are made on a paid basis.
7. OURSSON AG is not responsible for any damage directly or indirectly caused by their products to people, pets, property, if it occurred as a result of non-observance of the rules and conditions of use, storage, transportation or installation of the product, intentional or negligent actions of consumer or third parties.
8. Under no circumstances, OURSSON AG is not responsible for any special, incidental, indirect or consequential loss or damage, including but not limited to: lost profits, damages caused by interruptions in the commercial, industrial or other activities, arising from the use of or inability to use the product.
9. Due to continuous product improvement, design elements and some technical specifications are subject to change without prior notice from the manufacturer.

Using the product when after the terms of use (lifetime):

1. Lifetime set by OURSSON AG for this product applies only when the product is used exclusively for personal, family or household needs, as well as the consumer observes the correct operation, storage and transportation of products. Under the condition of careful handling of the product and compliance with the rules of operation the actual life may exceed the lifetime set by OURSSON AG.
2. At the end of the product lifetime, you should contact an authorized service center for to conduct a preventive maintenance of the product and determine the suitability for further use. Work on conducting a preventive maintenance of the products is also made in service centers on paid basis.
3. OURSSON AG does not recommend the use of this product after the end of its lifetime without its preventive maintenance by the authorized service center, since in this case, the product can be dangerous to the life, health or property of the consumer.

Product Recycling and Disposal

After the expiration of the lifetime, the product cannot be disposed with another household waste. Instead, it shall be deposited in the appropriate recycling collection point for electrical and electronic equipment for proper treatment and disposal in accordance with federal or local law. By disposing correctly this product, you will help to conserve natural resources and preventing the product from damaging the environment and human health. For more information on the collection point and recycling of this product, please contact your local municipal authorities or the enterprise for household waste disposal.



OTHER

Date of manufacture

Each product has a unique serial number in the form of alphanumeric row and is duplicated with a barcode that contains the following information: name of the product group, date of manufacture, serial number of the product. Serial number is located on the rear of the product, on the package and the warranty card.



- ❶ The first two letters - correspondence to the product group (juice maker – JM).
- ❷ The first two digits – year of manufacture.
- ❸ The second two digits – week of manufacture.
- ❹ The last two digits – serial number of product.

Note! To avoid misunderstandings, we highly recommend you to read carefully the instruction manual and the warranty obligations. Check the correctness of the warranty card. Warranty card is valid only if the following are correctly and clearly stated: model, serial number, date of purchase, clear stamps, buyer's signature. The serial number and the model of the device must be the same as in the warranty card. If these conditions are not fulfilled or the data specified in the warranty card was changed, the warranty card is invalid.



OURSSON AG hotline provides complete information about the company's activity in Russia, CIS and Baltic countries. Professional operators quickly answer to any question. You can contact the unified center for service support, for recommendations about the setup and connection, to get information about local sales, with questions about the promotions and yearly drawings conducted by the company, as well as with any other questions about the company's activities on the territory of Russia, CIS and Baltic countries.

Any questions? Call us, we can help!

Hotline OURSSON AG (free calls from landline phones)

8 800 100 8708.

The hotline work schedule is: Monday-Friday from 9:00 to 20:00 (Moscow time). Saturday, Sunday and public holidays are rest days.

This manual is under protection of international and Russian copyright law. Any unauthorized use of the instructions, including copying, printing and distribution, but not limited to, involves the application of the guilty person to civil liability and criminal liability in accordance with Article 146 of the Criminal Code and the administrative responsibility in accordance with Article 7.12 of the Administrative Code (previously Article 150.4).

Contact information:

1. Manufacturer of goods - OURSSON AG (Orson AG) Utokvay 39, 8008 Zurich, Switzerland.
2. Organization authorized to accept and meet the demands for the goods of poor quality, - «BBK Service Center», 109202, Moscow, Fraser Highway 17A, 1A.

OURSSON AG
MADE IN KOREA



A Filled by the service center

DATE OF RECEPTION

DATE OF ISSUE

SPECIAL NOTES

service
center
stamp

WARRANTY CARD «A»

Filled by the selling company

DATE OF RECEPTION

DATE OF ISSUE

ORDER NUMBER

DEFECT DESCRIPTION

SPECIALIST

IRS CODE

service
center
stamp

B Filled by the service center

DATE OF RECEPTION

DATE OF ISSUE

SPECIAL NOTES

service
center
stamp

WARRANTY CARD «Б»

Filled by the selling company

DATE OF RECEPTION

DATE OF ISSUE

ORDER NUMBER

DEFECT DESCRIPTION

SPECIALIST

IRS CODE

service
center
stamp

C Filled by the service center

DATE OF RECEPTION

DATE OF ISSUE

SPECIAL NOTES

service
center
stamp

WARRANTY CARD «B»

Filled by the selling company

DATE OF RECEPTION

DATE OF ISSUE

ORDER NUMBER

DEFECT DESCRIPTION

SPECIALIST

IRS CODE

service
center
stamp



Warranty card

Filled by the selling company

WARRANTY

DEVICE _____

MODEL _____

SERIAL NUMBER

DATE OF SALE _____

SELLING COMPANY _____

ADDRESS OF SELLING COMPANY _____

PHONE OF SELLING COMPANY _____

I HAVE READ THE TERMS OF WARRANTY

BUYER'S SIGNATURE

service center stamp

Note!

Please ask the seller to fill completely the warranty card and the warranty tickets.



WARRANTY CARD «A»

Filled by the selling company

DEVICE _____

MODEL _____

SERIAL NUMBER

DATE OF SALE _____

SELLING COMPANY _____

service
center
stamp



WARRANTY CARD «B»

Filled by the selling company

DEVICE _____

MODEL _____

SERIAL NUMBER

DATE OF SALE _____

SELLING COMPANY _____

service
center
stamp



WARRANTY CARD «C»

Filled by the selling company

DEVICE _____

MODEL _____

SERIAL NUMBER

DATE OF SALE _____

SELLING COMPANY _____

service
center
stamp





Hotline OURSSON AG
(free calls from landline phones):
8 800 100 8 708

www.oursson.ru

