

oursson®

bon appétit

Instruction manual

with a warranty card



Latte

Cappuccino



MILK FROTHER
MF2500



Congratulation on buying your new Milk frother!

Brief manual

Before utilizing the device, read the instructions manual and safety instructions.

4 Introduction

- 4 Safety Instructions
- 6 Preparing the milk frother
- 7 Product set
- 7 Elements of Design

8 Operation

- 8 Assembling the whisk
- 8 Preparation procedure
- 10 Cleaning and maintenance
- 11 Features
- 11 Operation tips

12 Other

- 12 Specifications
- 13 Servicing

INTRODUCTION

SAFETY INSTRUCTIONS



Danger symbol

A reminder to user about high voltage.

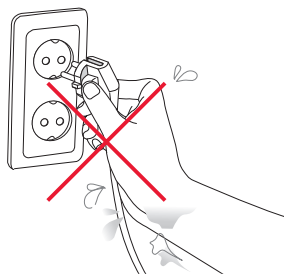
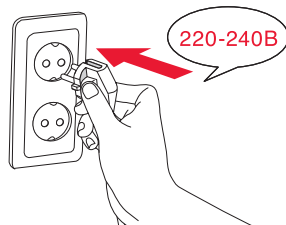


Warning symbol

A reminder to user about the necessity of operating exactly according to the instructions.

When using electrical appliances should take the following precautions:

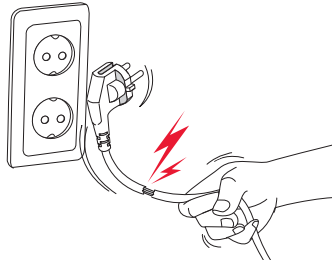
- Use the device according to the following instructions manual.
- Install the device on a stable surface.
- Use only the tools, which are included in the product set.
- To protect against risk of electrical shock do not put the cord in water or other liquid. If for some reason the water got into the unit, contact an authorized service center (ASC) OURSSON AG.
- For power supply, use a power grid with proper characteristics.
- Do not use the device in areas where the air can contain vapors of flammable substances.
- Never attempt to open the device by yourself – it could



possibly be the reason of an electrical shock can lead to product malfunction and will invalidate the manufacturer's warranty. For repair and maintenance, contact only authorized service centers meant for repair of products under the trademark OURSSON.

- When moved from a cool to a warm place and vice versa unpack it before use and wait 1-2 hours without turning it on.
- In order to prevent electrical shock do not immerse the device or the wires into the water.
- Be particularly careful and cautious when using the device near children.
- Do not touch any moving parts, as this may cause injury.
- The power cord is specially made relatively short in order to avoid the risk of injury.
- Do not allow the cord to hang over the sharp edge of the table or touch hot surfaces.
- Do not connect this device to a grid which is overloaded with other appliances: it can lead to the fact that the device will not function properly.
- After use, make sure to disconnect the device from the power grid.

- Keep the device from bumps, falls, vibration and other mechanical influences.
- Make sure to disconnect the device from the power grid before cleaning or changing accessories.
- Do not use the device outdoors.
- This appliance is not intended for use by persons (including children) with reduced physical, sensory or mental capabilities, or lack of experience and knowledge. They can only use the device under the supervision of the person responsible for their safety, or after instruction on the safe use of the device. Do not allow children to play with the product.
- Use the product for its intended purpose.
- This product is intended only for use in the home.
- If the power cord is damaged, it must be replaced by a specialist from the authorized service center (ASC) OURSSON AG to avoid danger.
- Use only the tools, which are included in the product set.
- When cleaning the appliance do not use abrasives and organic cleaners (alcohol, gasoline, etc.).
- Do not place the working device on a polished wooden surface in order to avoid damage.



- Do not let the device operate without milk.
- Do not exceed the maximum capacity, otherwise the container may overflow during operation.
- In case of fire, extinguish the device only with the help of fire blankets.
- This device complies with directive 89/336 CEE relating to electromagnetic compatibility.
- Do not put objects or fingers into the opening of the device to avoid injury.

INTRODUCTION

PREPARING THE MILK FROTHER

Before using the milk frother, follow safety precautions and follow these steps:

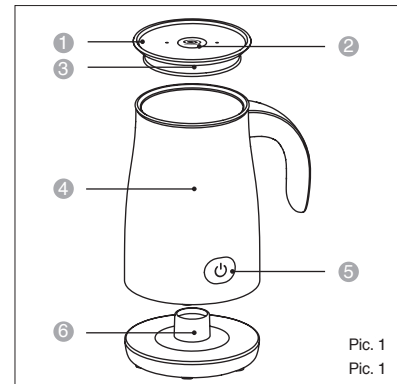
- Unpack the milk frother and remove all packing material and stickers;
- Preserve the original packaging
- Read the precautions
- Check the product set, check the device for defects and deformities
- Plug in the device.
- Make sure there are no sparks or burning smell in the joints of the plug and socket. If there are sparks and a burning smell, unplug the device, contact an organization serving your electrical network, and authorized OURSSON AG service center.
- Before first use, thoroughly wash and wipe dry the whisk, lid and container.
- The device is ready for use.

PRODUCT SET

Milk frother	1 pc.
Lid with a magnet whisk	1 pc.
Stand with a cord	1 pc.
Instructions manual	1 pc.
Recipe book.....	1 pc.
Warranty card	1 pc.

ELEMENTS OF DESIGN (PIC. 1)

- ① Lid.
- ② Vent.
- ③ Ring seal.
- ④ Cordless cooking container.
- ⑤ ON/OFF button.
- ⑥ Stand with a cord.



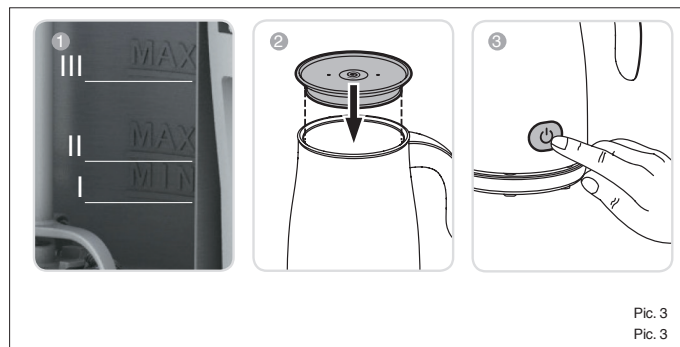
OPERATION

ASSEMBLING THE WHISK (Pic. 2)

- Insert the whisk into the basket;
- The basket holds the whisk;
- Insert the lid into the cooking container.

PREPARATION PROCEDURE (Pic. 3)

- 1 ADDING MILK INTO THE COOKING CONTAINER**
Fill the cooking container with milk.
Follow these filling levels.
 - Between I and II – for foaming hot milk or for foaming cold milk.
 - Between I and III – for heating milk.
- 2 CLOSING THE LID**
Place the lid on the frother's container as shown on the picture and slightly press it, to ensure that it is tightly closed.
- 3 ON/OFF**
Press ON/OFF button to choose the required mode.



NOTE! Using the frother without milk may damage the device.

NOTE! Do not fill the container higher than the max mark.

Function	Action	Indication
Hot milk foaming	Press ON/OFF button once	ON/OFF button is lit red
Heating milk	Press ON/OFF button twice	ON/OFF button flashes red
Turning OFF	Press ON/OFF button once	NO
	Remove the device from the stand	
Cold milk foaming	Press and hold ON/OFF button for 2,5 seconds	ON/OFF button is lit blue
Turning OFF	Remove the device from the stand	NO
Automatic turning off	After foaming it will turn off automatically	NO

NOTE! **COLD MILK FOAMING** can not be turned off, if the heating milk mode is on. To turn off the **COLD MILK FOAMING** mode, turn off the device and let the device cool.

OPERATION

CLEANING AND MAINTENANCE (Pic. 4)

1 BEFORE CLEANING

Remove the device from the stand.

2 COOKING CONTAINER

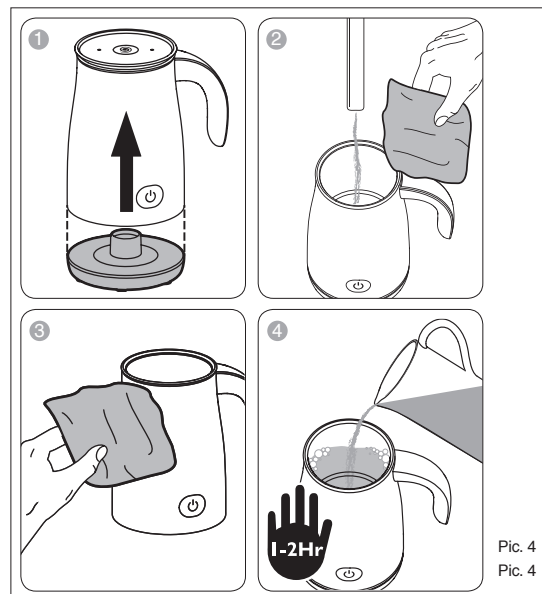
Wash and clean the container with a hot soapy water. Then wipe it dry with a soft non-abrasive cloth.

3 BODY

Wipe the body with a soft damp cloth.

4 REMOVAL OF RESIDUAL MILK

Milk can remain at the bottom of the container. To remove it, fill the container with a warm soapy water for a few hours. Then wipe it with a soft, non-abrasive cloth.



Pic. 4
Pic. 4

NOTE! Wash the cooking container after every use

WHISK AND LID

Take out the whisk. You can wash whisk and lid in a dishwasher. Set the dishwasher temperature to 40°C and place whisk and lid on the upper shelf. Remove them from the dishwasher before the drying mode turns on. Make sure that the vent holes of the lid are open and ring seal is completely clean.

NOTE!

Do not immerse the cooking container or stand into the water as this may lead to a breakdown. Do not use abrasive detergents or materials.

**NOTE!**

Never use sharp objects for cleaning, as this may damage the non-stick coating of the device.

**FEATURES**

- Three cooking modes.
- Heating milk up to 72 oC
- Silent operation.
- Magnet whisk.
- Graded cooking container.
- Non-stick coated container.
- Easy cleaning.
- Overheat protection.
- Automatic turn off.
- Color:
 - MF2500/IV – Ivory.
 - MF2500/OR – Orange.
 - MF2500/DC – Dark Cherry.

OPERATION TIPS

- For a better taste use skimmed milk. It is recommended to use high protein milk. It is not recommended to use milk with > 3.0% fat.
- When using heating or foaming mode wait for about two minutes for temperature sensor to return to its original state, and frother is ready for a further work. To lower the time, wash the container with cold water and wipe it dry.
- The frother is designed only for milk foaming. Do not add other ingredients into the frother.
- Use foamed milk to prepare latte and cappuccino.
- Use heated milk to prepare coffee latte and hot chocolate.
- Use cold foamed milk to prepare milkshakes.

OTHER

SPECIFICATIONS

MODEL		MF2500
Power consumption, W		420-500
Rated voltage		~ 220-240V; 50 Hz
Capacity, ml	Max	250
	Min	125
Protection class		I
Storage and transportation temperature requirements		- 25°C to + 35°C
Operation temperature requirements:		+ 5°C to + 35°C
Humidity Requirements:		15 - 75%
Weight, kg		0,87
Dimensions (HxWxL), mm		195x170x118

NOTE! Only a qualified specialist from OURSSON AG service center must do the repair.

SERVICING

Company OURSSON AG expresses great appreciation to you for choosing our products.

We have done everything possible so that this meets your needs, and the quality corresponds to the best world standards. If your OURSSON branded product will need maintenance, please contact one of the authorized service center (hereinafter - ASC). A complete list of ASC and their exact addresses can be found on the website www.oursson.ru, as well as by calling

free hotline number OURSSON AG.

If you have questions or problems with OURSSON AG products, please contact in writing form the organization authorized to accept and meet the demands for the products of poor quality, - «BBK Service Center», 109202, Moscow, Fraser Highway, 17A , 1A or email info@oursson.ru.

Warranty obligations OURSSON AG:

1. Warranty obligations OURSSON AG, provided ASC OURSSON AG, apply only to models designed OURSSON AG for the production or supply and sale within the country where the warranty service is provided, purchased in this country, certified for compliance with the standards of this country, and also marked the with official marks of conformity.
2. Warranty obligations OURSSON AG operate within the law on protection of consumer rights and are regulated by the laws of the country in which they are provided, and only when the product is used exclusively for personal, family or household purposes. Warranty obligations OURSSON AG shall not apply to uses of goods for business purposes or in connection with the acquisition of goods to meet the needs of enterprises, institutions and organizations.
3. OURSSON AG sets for its products the following terms of use and warranty periods:

Product name	Terms of use	Warranty Period
Microwave ovens breadmakers, induction hobs	60	12
Multicookers, kitchen processors, electric kettles, electric grills, hand blenders, hand mixers, meat grinders, toasters, airpots, toasters, juicers, steamers, coffee makers, choppers	36	12
Kitchen scales	24	12

4. Warranty obligations OURSSON AG shall not apply to the following products, if their replacement is assumed and is not connected with disassembling products:

OTHER

- Batteries.
 - Cases, straps, cords for carrying, mounting accessories, tools, documentation that came with the product.
5. Warranty does not cover defects caused due to violations of the rules of consumer use, storage or transportation of the goods, actions of third parties or force majeure, including but not limited to the following cases:
 - If the defect was a result of careless handling, used for other purposes, violations of conditions and rules of operation set forth in the instruction manual, including as a result of exposure to high or low temperatures, high humidity or dust, traces of opening the device independently and/ or self-repair, mismatch state standards for power grids, getting liquids, insects or other foreign objects, substances inside the device, as well as long-term use of the product in extreme operational modes.
 - If the defect of the product was a result of unauthorized attempts to test the product or make any changes in its construction or software programs, including repair or maintenance in unauthorized service centers.
 - If the defect of the product was a result of use of non-standard and/or low quality equipment, accessories, spare parts, batteries.
 - If the defect of the product is associated with its use in conjunction with additional equipment (accessories), other than additional equipment recommended by OURSSON AG for use with this product.
OURSSON AG is not responsible for the quality of the additional equipment (accessories) manufactured by third parties, for the quality of its products together with such equipment, as well as the quality of the work of the additional equipment of OURSSON AG together with the products of other manufacturers.
 6. Product defects detected during the lifetime of the product are eliminated by the authorized service centers (ASC). During the warranty period, elimination of defects is free of charge with the presentation of the original certificate of guarantee and documents that confirm the fact and date of the contract of retail purchase. In the absence of such documents, warranty period is calculated from the date of manufacture of goods. It should be taken into account:
 - Setup and Installation (assembly, the connection, etc.) of the product described in the documentation attached to it, does not enter the scope of warranty OURSSON AG and can be performed by the user as well as the specialists of most authorized service centers on a paid basis.
 - Work upon maintenance of products (cleaning and lubricating the moving parts, replacement of consumables and supplies, etc.) are made on a paid basis.
 7. OURSSON AG is not responsible for any damage directly or indirectly caused by their products to people, pets, property, if it occurred as a result of non-observance of the rules and conditions of use, storage, transportation or installation of the product, intentional or negligent actions of consumer or third parties.
 8. Under no circumstances, OURSSON AG is not responsible for any special, incidental, indirect or consequential loss or damage, including but not limited to: lost profits, damages caused by interruptions in the commercial, industrial or other activities, arising from the use of or inability to use the product.
 9. Due to continuous product improvement, design elements and some technical specifications are subject to change without prior notice from the manufacturer.
дварительного уведомления со стороны производителя.

Using the product when after the terms of use (lifetime)

1. Lifetime set by OURSSON AG for this product applies only when the product is used exclusively for personal, family or household needs, as well as the consumer observes the correct operation, storage and transportation of products. Under the condition of careful handling of the product and compliance with the rules of operation the actual life may exceed the lifetime set by OURSSON AG.
2. At the end of the product lifetime, you should contact an authorized service center for to conduct a preventive maintenance of the product and determine the suitability for further use. Work on conducting a preventive maintenance of the products is also made in service centers on paid basis.
3. OURSSON AG does not recommend the use of this product after the end of its lifetime without its preventive maintenance by the authorized service center, since in this case, the product can be dangerous to the life, health or property of the consumer.

Product Recycling and Disposal

After the expiration of the lifetime, the product cannot be disposed with another household waste. Instead, it shall be deposited in the appropriate recycling collection point for electrical and electronic equipment for proper treatment and disposal in accordance with federal or local law. By disposing correctly this product, you will help to conserve natural resources and preventing the product from damaging the environment and human health. For more information on the collection point and recycling of this product, please contact your local municipal authorities or the enterprise for household waste disposal.



ПРОЧЕЕ

Date of manufacture

Each product has a unique serial number in the form of alphanumeric row and is duplicated with a barcode that contains the following information: name of the product group, date of manufacture, serial number of the product.

Serial number is located on the rear of the product, on the package and the warranty card.

- ❶ The first two letters-correspondence to the product group (milk frother - MF).
- ❷ The first two digits – year of manufacture.
- ❸ The second two digits – week of manufacture.
- ❹ The last two digits – serial number of product.



Note! To avoid misunderstandings, we highly recommend you to read carefully the instruction manual and the warranty obligations. Check the correctness of the warranty card. Warranty card is valid only if the following are correctly and clearly stated: model, serial number, date of purchase, clear stamps, buyer's signature. The serial number and the model of the device must be the same as in the warranty card. If these conditions are not fulfilled or the data specified in the warranty card was changed, the warranty card is invalid..



OURSSON AG hotline provides complete information about the company's activity in Russia, CIS and Baltic countries. Professional operators quickly answer to any question. You can contact the unified center for service support, for recommendations about the setup and connection, to get information about local sales, with questions about the promotions and yearly drawings conducted by the company, as well as with any other questions about the company's activities on the territory of Russia, CIS and Baltic countries.

Any questions? Call us, we can help!

Hotline OURSSON AG (free calls from fixed phones)

8 800 100 8708.

The hotline work schedule is: Monday-Friday from 9:00 to 20:00 (Moscow time). Saturday, Sunday and public holidays are rest days.

This manual is under protection of international and Russian copyright law. Any unauthorized use of the instructions, including copying, printing and distribution, but not limited to, involves the application of the guilty person to civil liability and criminal liability in accordance with Article 146 of the Criminal Code and the administrative responsibility in accordance with Article 7.12 of the Administrative Code (previously Article 150.4).

Contact information:

1. Manufacturer of goods - OURSSON AG (Orson AG) Utokvay 39, 8008 Zurich, Switzerland.
2. Organization authorized to accept and meet the demands for the goods of poor quality, – «Management Service Company», 109202, Moscow, Fraser Highway 17A, 1A. Ukraine LLC «Universal Distribution Company», 03065, Kyiv, blvd. I.Lepse / Academica Kablukova, 51/16.
3. Certification information product available on the website www.oursson.com.
4. Importers of products OURSSON AG: Russia: OOO "Orson"; 125171, Russia, Moscow, Leningrad Highway 16A, 2. Republica Moldova: S.C. «PLAI VERDE» S.R.L. MD-2002, str. Muncesti highway., 271/A, Chisinau. Ukraine: TOV "Universal Distribution Company "; 03065, Kyiv, blvd. I.Lepse / Akademika Kablukova, 51/16.
5. Product Suppliers OURSSON AG:
Belarus: "Nikita plus", 220094, Minsk, 2nd Cycle lane., 30, office 603.

OURSSON AG
MADE IN CHINA



www.oursson.com

